



SUP

SMART URBAN PARK
SYSTEM

The most innovative
parking system in the world.

YOUR LIFT TO THE FUTURE

SUP[®]— Smart Urban Park system[®]

Are you still just parking
or are you letting your garage
park for you yet?

With the new Smart Urban Park system[®] (SUP[®]) the architectural office Strohecker architects from Graz is paving the way towards the future of mobility. The parking concept, which will be available in a Junior, Master and Senior variation, scores with its sophisticated e-mobility focus, complete CO₂ neutrality, easy maintenance and fast construction phase.

The innovative system has also now received one of the highest honours in architecture. Strohecker Architekten has received a nomination for the Future Project Award 2018 at MIPIM, the leading trade fair for the real estate industry.

More space for urban living - that's what the fully automated, subterranean system will create in city centers from now on. The disadvantages of an ever-increasing lack of space will be minimized; a maximum number of cars can be accommodated in a minimum amount of space.

But that is not all. The SUP[®], as an autonomous parking facility with e-charging function, is the perfect technical addition for future autonomous mobility concepts.

That's how simple parking will be in the future. Getting in and out of the vehicle will take place in the access area of the SUP[®], so the vehicle will already be turned over to the intelligent garage above ground. An up to fourfold lift system guarantees a fast, fully automatic parking process as well as a prompt return of the vehicles to the surface.

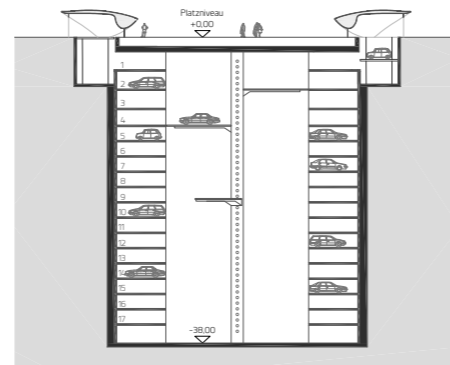
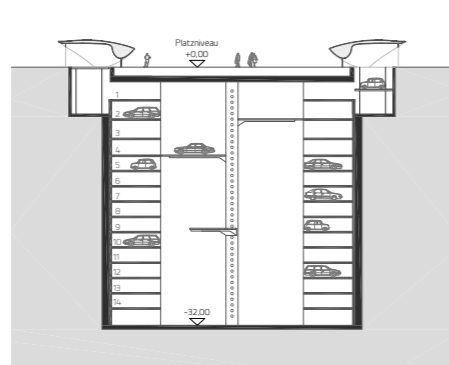
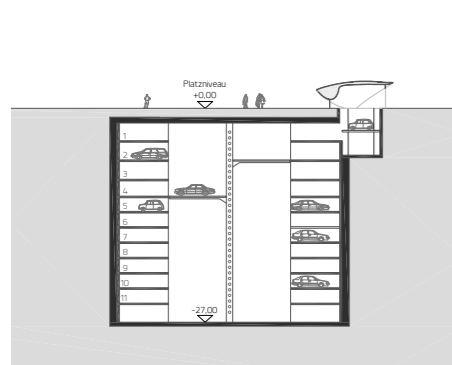
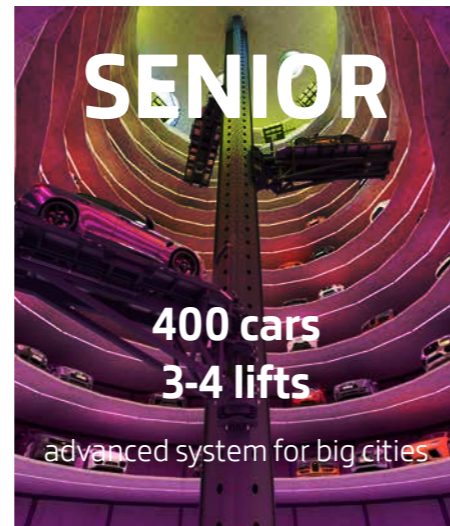
You can easily control the parking process yourself. An app handles the logistic aspects. If you want your vehicle back, you enter the command via your smartphone or smartwatch. The app then provides precise information on when the car is ready to be picked up. If you are running late, the car is automatically parked again.



80^{sec.}

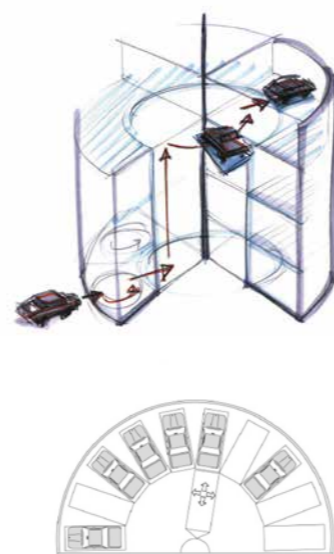
for the quickest and
easiest parking
experience in the world

Choose between three SUP[®] models for urban center solution



The whole parking process takes about **80 seconds per lift**. The sophisticated technical system comes from the German company PALIS[®], which is also responsible for the two famous parking towers in the VW Autostadt in Wolfsburg Germany and the Porsche Miami Tower in Florida. The System in Wolfsburg has been running without trouble for 17 years.

As the motor of the vehicle is already turned off at the ground level, SUP[®] system can score with complete **CO₂ neutrality**. The future of mobility is taken into account by means of an ingenious E-charging system. As soon as a car is parked in one of the parking spots, it can be autonomously charged via integrated charging modules on the floor. The e-vehicle owner always gets back a completely charged vehicle. In the future, the autonomous refueling of the vehicle with hydrogen will also be possible.



One SUP[®] – 7 benefits

The SUP[®], as an autonomous parking facility with e-charging function is the perfect technical addition for future autonomous mobility concepts.



EMISSION-FREE

The radical reduction of CO₂ emissions is the result of the fully automated parking process. When there is no need to search for parking spaces on the surface, emissions of pollutants are massively reduced.



SCALABLE

The SUP[®] product is intended to be a scalable model for the different requirements of inner-city areas, both in terms of the number of accommodation possibilities as well as in terms of the number of entry and exit zones.



CAR SHARING STATION

In addition, a SUP[®] can be used to house a complete car sharing center. This means that interested "mobilists" can always have a large number of wheels at their disposal centrally, without having to own a vehicle themselves.



E-MOBILITY FULLY ELECTRIFIED

The complete electrification of the entire SUP[®] system increases the attractiveness of electric vehicles in the inner city.



CONSERVES RESOURCES

Due to the compact, simple and space-saving design, approximately one third of the excavation, surface area and resources are saved compared to a conventional underground garage.



MINIMIZES PARKING SPACES ABOVE GROUND

The inner city zones are free of surface parkers.



MORE CAR FREE AREAS

The core urban area becomes more attractive by moving cars underneath the surface - more space and surface area become available for people and community life.

Easy and fast access

to your parking spot via the SUP[®] app from Accessio



Thanks to new technical possibilities which will be anchored in our everyday life through the digitalization of our society, a SUP[®] community is being created. The SUP[®] systems' control software creates **swarm intelligence among all SUP[®] users**. The smart vehicles know where they are and can be purposefully and precisely directed to free slots by their users via app, similar to a beehive.

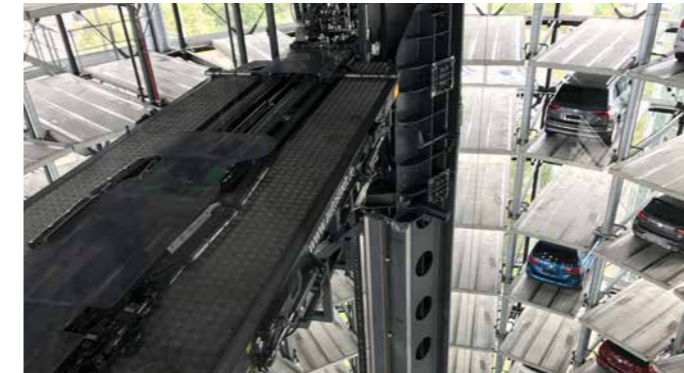
In addition, the SUP[®] system will also make it possible to carry out the day-to-day, fully automatic handling of trips without any problems in the future. In the morning, the passenger climbs into the vehicle – ordered via mobile phone – which then takes him to the desired destination. If required the smart car uses the next free slot of the nearest SUP[®] for parking and charging.

PARKING COSTS AND ADDITIONAL SERVICES, SUCH AS CHARGING, ARE EASILY BILLED VIA THE SUP APP.

SUP[®] – the safest car park ever

When no risk is involved in your parking adventure it becomes a truly fun experience.

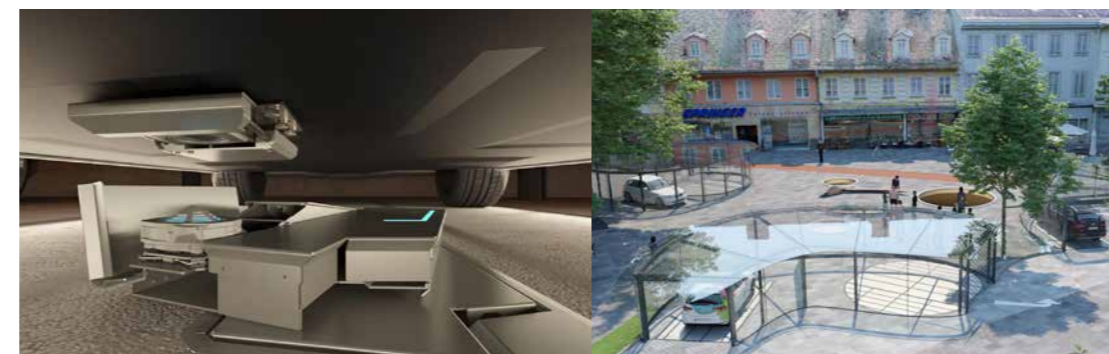
The autonomous lift reduces the risk of accidents to zero. Furthermore, there is no risk of theft and no need for extra women and handicapped parking space.



SUP[®] – the biggest E-car charging station for your city

A revolutionary charging experience - Fully automatic charging by Volterio

VOLTERIO represents and industrializes a ground-breaking approach that is redefining charging of electric vehicles. It is truly the smartest, fully automatic, efficient, affordable and high power charging solution.



When an electric vehicle with the VOLTERIO charging system approaches to the respective parking lot, the base unit automatically connects to the vehicle's underbody via a powerful physical connection. The VOLTERIO system can be easily retrofitted to almost every electric vehicle.

SUP[®] system allows more space for urban living

The cities of the future will be conquered back by its people. Thanks to the Smart Urban Park system[®].

That's what the fully automated, subterranean system will increasingly create in urban centers in the future. The disadvantages of an ever-increasing lack of space will be minimized; a maximum number of cars can be accommodated in a minimum amount of space.



SUP[®] system cost - one third less excavation - reduction of building area - minimal effort in operating a building - less required lightning - less maintenance expenses. Due to the economical handling of space and resources SUP is – if the area is suitable for the parking system – is way more inexpensive than standard parking garages.





watch the SUP® system
video on vimeo



SUP®system Holding

CEO Arch. DI Guido R. Strohecker / DI Robert Wendl
Kaiserfeldgasse 1 | 8010 Graz | Austria
info@sup-system.com
www.sup-system.com